



WELCOME

1ST GRADE

CURRICULUM

NIGHT

Alabama 1st Grade Course of Study



ELA- ENGLISH LANGUAGE ARTS

- Literacy Foundations
 - Oral Language
 - Concepts of Print
 - Phonemic Awareness and Phonological Awareness
 - Phonics
 - Fluency
 - Vocabulary
 - Comprehension
 - Writing

[Link to Parent Guide](#)




STANDARDS

POWER STANDARDS

- In Madison City we teach all Alabama standards to mastery - but not all are on Report Cards
- Standards that are critical and prerequisite for 2nd grade are **POWER STANDARDS**
- These are in **BOLD** and are used to determine preparedness for 2nd grade
- Refer to Parent Report of learning

LITERACY ACT

- The Alabama legislature passed the Alabama Literacy Act in 2019. The Alabama Literacy Act was established to ensure students are able to read at or above grade level by the end of the 3rd grade.
 - The law states that all 3rd grade students shall demonstrate sufficient reading skills for promotion to 4th grade.
- 

Independent
Reading

Stations

Whole &
Small Group

Tier I/Tier II



95 PERCENT PHONICS

- ★ Phonemic Awareness
- ★ Phonological Awareness
- ★ Phonics
- ★ Handwriting
- ★ Dictation type Assessments

OPEN COURT READING

- ★ Comprehension
- ★ Vocabulary
- ★ Writing
- ★ Grammar
- ★ Weekly/Unit Assessments

❖ Weekly Test with Open Court

- Comprehension
- Vocabulary
- Grammar
- Will be done independently after Winter Break

❖ Phonics/Spelling with 95 Percent Phonics

- Weekly Dictation within sentences
- Not a list of words
- Focused Pattern of the Week

ASSESSMENTS

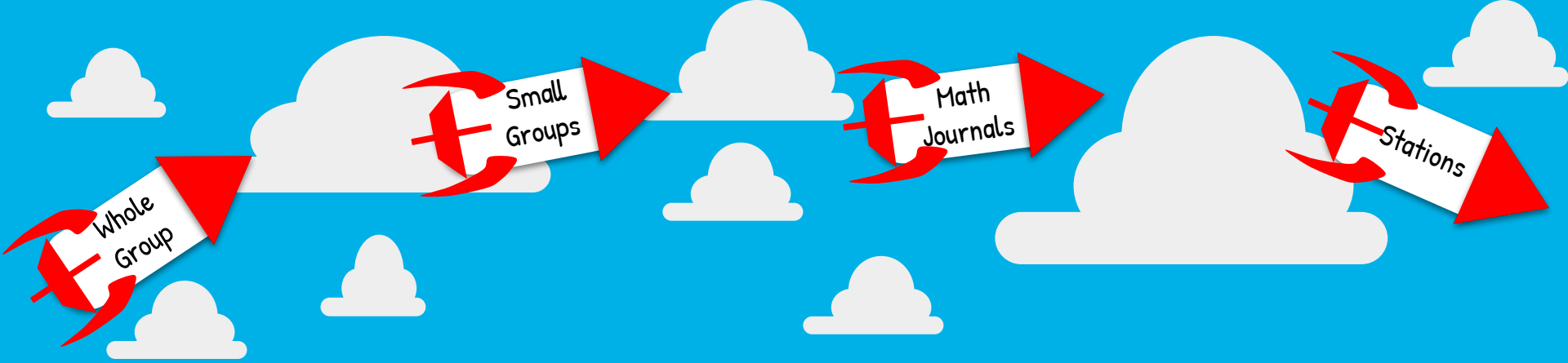
ASSESSMENTS

DIBELS 8TH EDITION

- Dynamic Indication of Basic Early Literacy Skills
 - Given 3 Times a Year
- Letter Naming Fluency
- Phoneme Segmentation Fluency
- Nonsense Word Fluency
- Word Reading Fluency
- Oral Reading Fluency

IREADY ASSESSMENTS

- Given 3/4 Times a Year
 - Reading
 - Math
- Multiple Sessions to complete
- Data will be sent home



MATH INSTRUCTION - BIG IDEAS

- Focus/Objectives: counting, number recognition, number sense, addition and subtraction, geometry, step by step problem solving, time, and measurement
- We use a lot of hands on activities and manipulatives to help students gain a concrete foundation of math concepts.
- Running Records will be used to monitor fluency
- Assessments will be given after the completion of each chapter/unit

A blue background with several white, stylized clouds of various sizes. In the center, a grey mechanical arm with two circular pincers holds a green, three-eyed alien. The alien has a small antenna on its head and is looking towards the left.

STANDARDS

- ★ Operations and Algebraic Thinking
- ★ Operations with Numbers – Base Ten
- ★ Data Analysis
- ★ Measurement
- ★ Geometry

NUMERACY ACT

The 2022 Alabama Numeracy Act is the state's comprehensive plan to improve mathematics proficiency of public school students in grades K-5 and ensure that those students are proficient in mathematics by the end of the fifth grade and to support for all students and teachers.



SCIENCE / SOCIAL STUDIES

- AMSTI Units: Sound, Light, and Sky + Wild Organisms
- Social Studies is integrated within Open Court Reading
- Focus on Character, Community, and Working Together
- Social Studies Weekly



All students in grades K-5 receive instruction focused on computational thinking, computer science, and digital literacy.

These lessons are embedded into the classroom curriculum, and also addressed the media center and during STEM class.

DIGITAL LITERACY

Build Strong Digital Citizens

Why?

We live in a digital world. [Click here to find out more!](#)



Tips for Families



[Media Balance](#)
[Privacy and Security](#)
[Digital Footprint](#)

WE FOCUS ON DEVELOPING THE WHOLE CHILD.



SPECIALS

Art

Music

Spanish

STEM

Library*

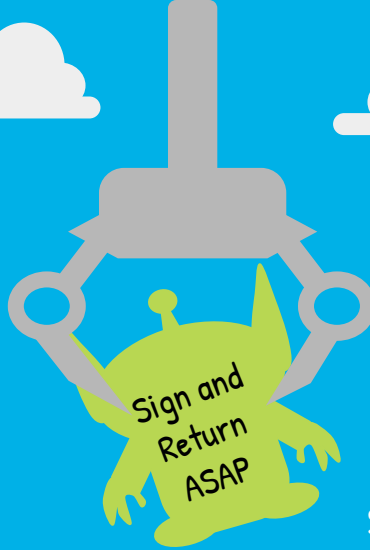
Counseling*

*Not weekly - but several times each year

Every
9 Weeks

GRADING SCALE

- 4 - Demonstrates an understanding of the standard independently
- 3 - Demonstrates an understanding of the standard with minimum supports
- 2 - Demonstrates an understanding of the standard with continuous supports
- 1 - Does not demonstrate an understanding of the standard

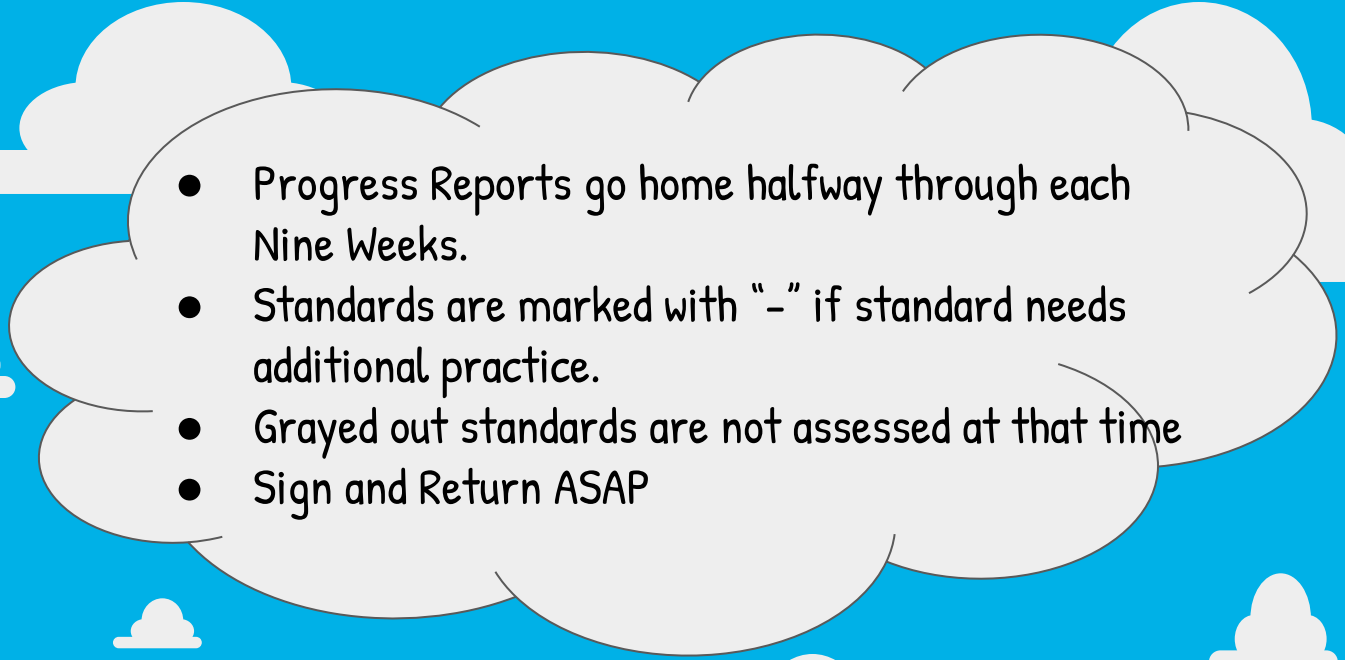


Report
Cards

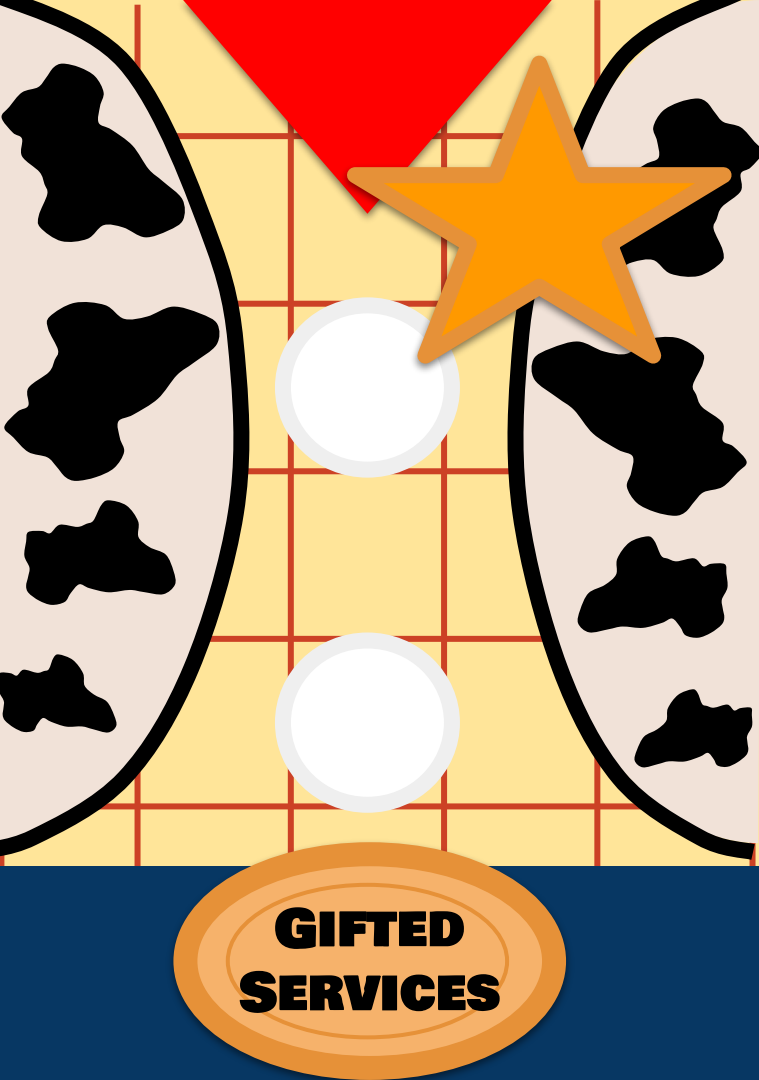
BEHAVIORS THAT SUPPORT LEARNING

- S - Satisfactory - Consistently demonstrates the behavior
- N - Needs Improvement - Inconsistently demonstrates the behavior
- U - Unsatisfactory - Rarely demonstrates the behavior and learning is affected

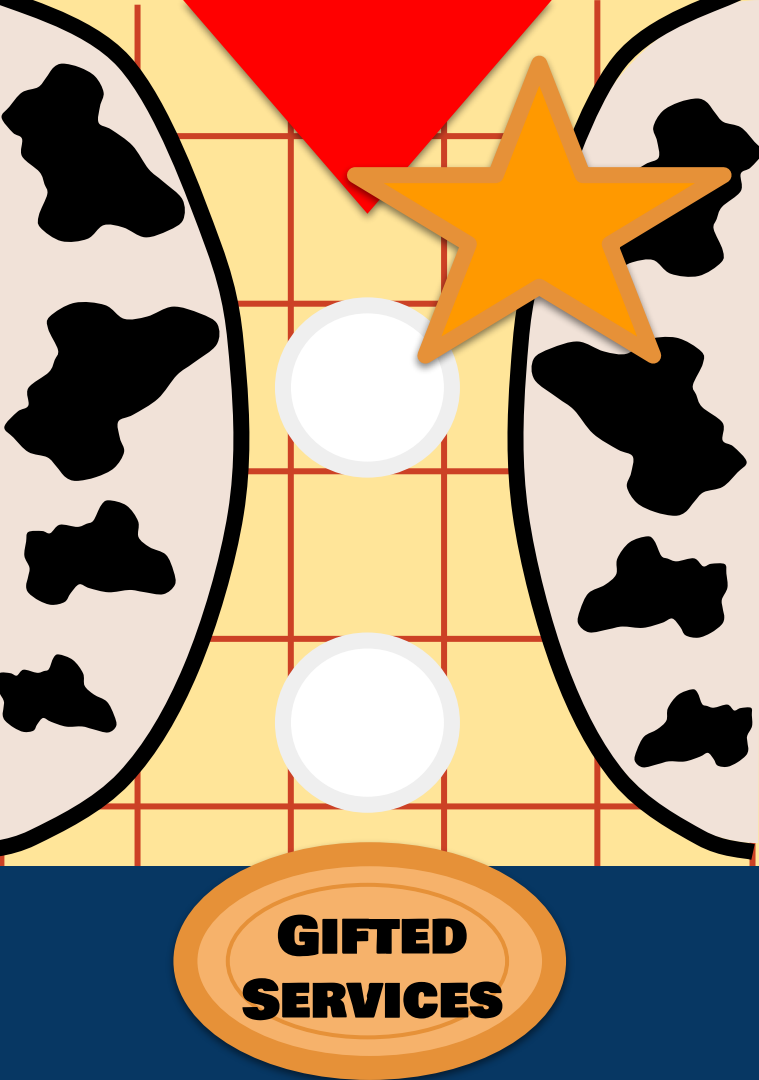
Year long standards

- 
- Progress Reports go home halfway through each Nine Weeks.
 - Standards are marked with “-” if standard needs additional practice.
 - Grayed out standards are not assessed at that time
 - Sign and Return ASAP

PROGRESS REPORTS



Intellectually gifted children and youth are those who perform or who have demonstrated the potential to perform at high levels in academic or creative fields when compared with others of their age, experience, or environment. These children and youth require services not ordinarily provided by the regular school program. Children and youth possessing these abilities can be found in all populations, across all economic strata, and in all areas of human endeavor. Gifted students may be found within any race, ethnicity, gender, economic class, or nationality. In addition, some students with disabilities may be gifted. Madison City Schools shall prohibit discrimination against any students on the above basis with respect to his/her participation in the gifted program.



Consultation services offered for K-2.

Collaboration services for general education teachers across grade levels concerning meeting the needs of high-end learners in the general education classroom.

Second Grade Child Find: All second graders are observed throughout their second grade year using state mandated protocol.

Pull out services for grades 3-5:

Students can be referred for screening at any time from 3rd-5th grade by teachers, counselors, administrators, parents or guardians, peers, self, and other individuals with knowledge of the student's abilities. These pullout services provide curriculum that is concept and problem based as well as provide the social and emotional support gifted learners often need.

6th grade Innovative Explorations course offered for gifted qualified students.

Advanced courses offered for grades 7-12.



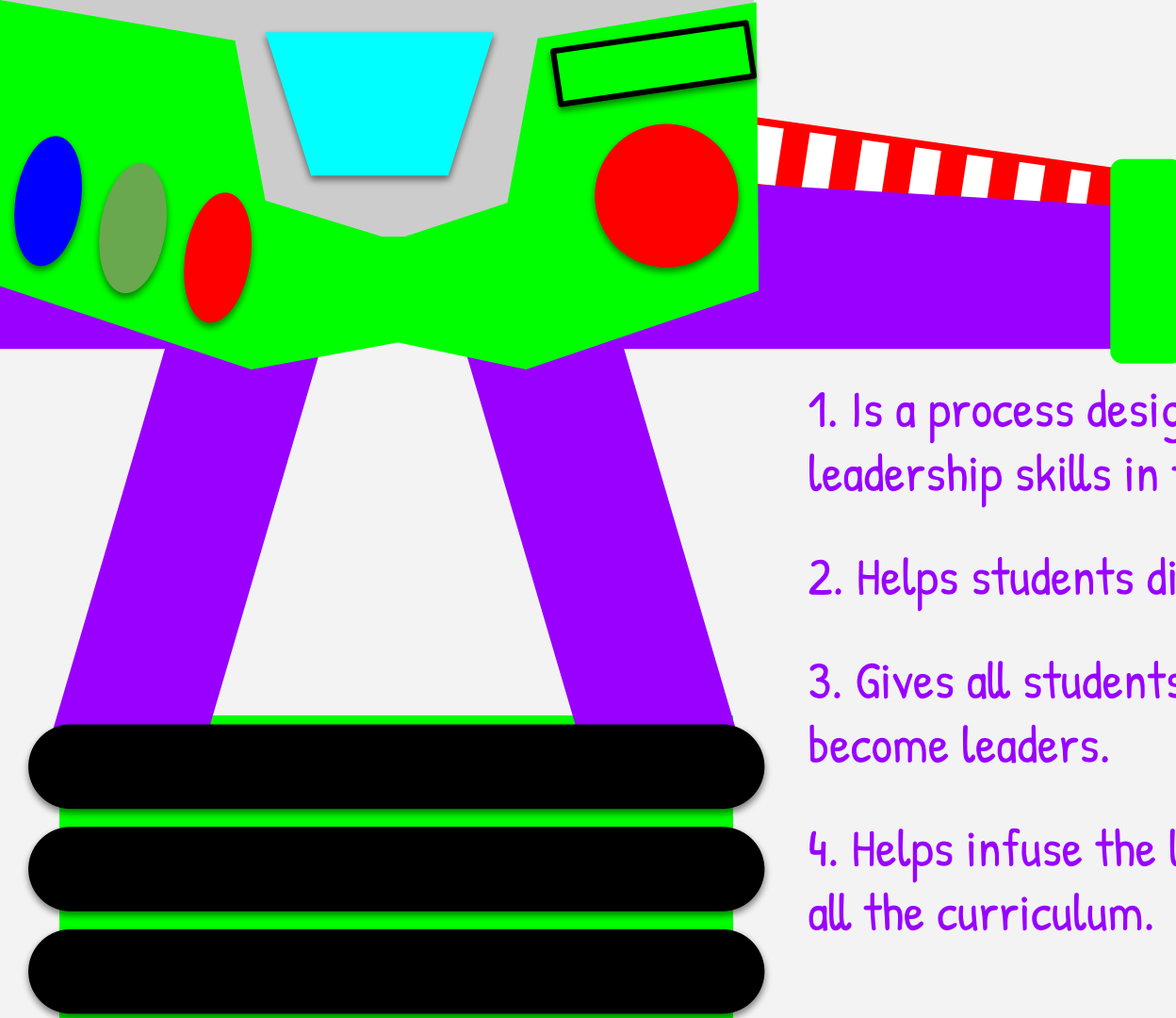
ESL PROGRAM

English as a Second Language

Jessica Mayes / Amber Moore – EL Teachers

- Works with English Learners who qualify for supplemental services.
- Provides targeted lessons to support listening, speaking, reading, and writing.

Jmayes@madisoncity.k12.al.us /
admoore@madisoncity.k12.al.us



LEADER IN ME

1. Is a process designed to help teachers develop leadership skills in their students.
2. Helps students discover their unique strengths.
3. Gives all students an opportunity to shine— to become leaders.
4. Helps infuse the language of the 7 Habits into all the curriculum.

HOMework

Monthly Menu

- o Complete 15 activities each month

- o Will begin after Labor Day


- Read 20 Minutes Daily

- Practice High Frequency Words

Teacher may send home additional practice for certain standards as needed.



GRADE LEVEL BEHAVIOR PLAN



CLASS DOJO

- Earn Positive/Negative Points based on choices made
- 20 Points earns visit to Class Treasure Box/Coupon
- Check Binder daily and initial DOJO Calendar to stay aware of progress
- 90% or higher is expectation per month/nine week period



Behavior Expectations

Losing 3 points in one day may result in an office referral

Ample opportunities for improvement given before a negative dojo given

POSITIVE POINTS

- ★ Following directions
- ★ Exhibiting respectful behaviors
- ★ Being responsible
- ★ Demonstrating the 7 Habits

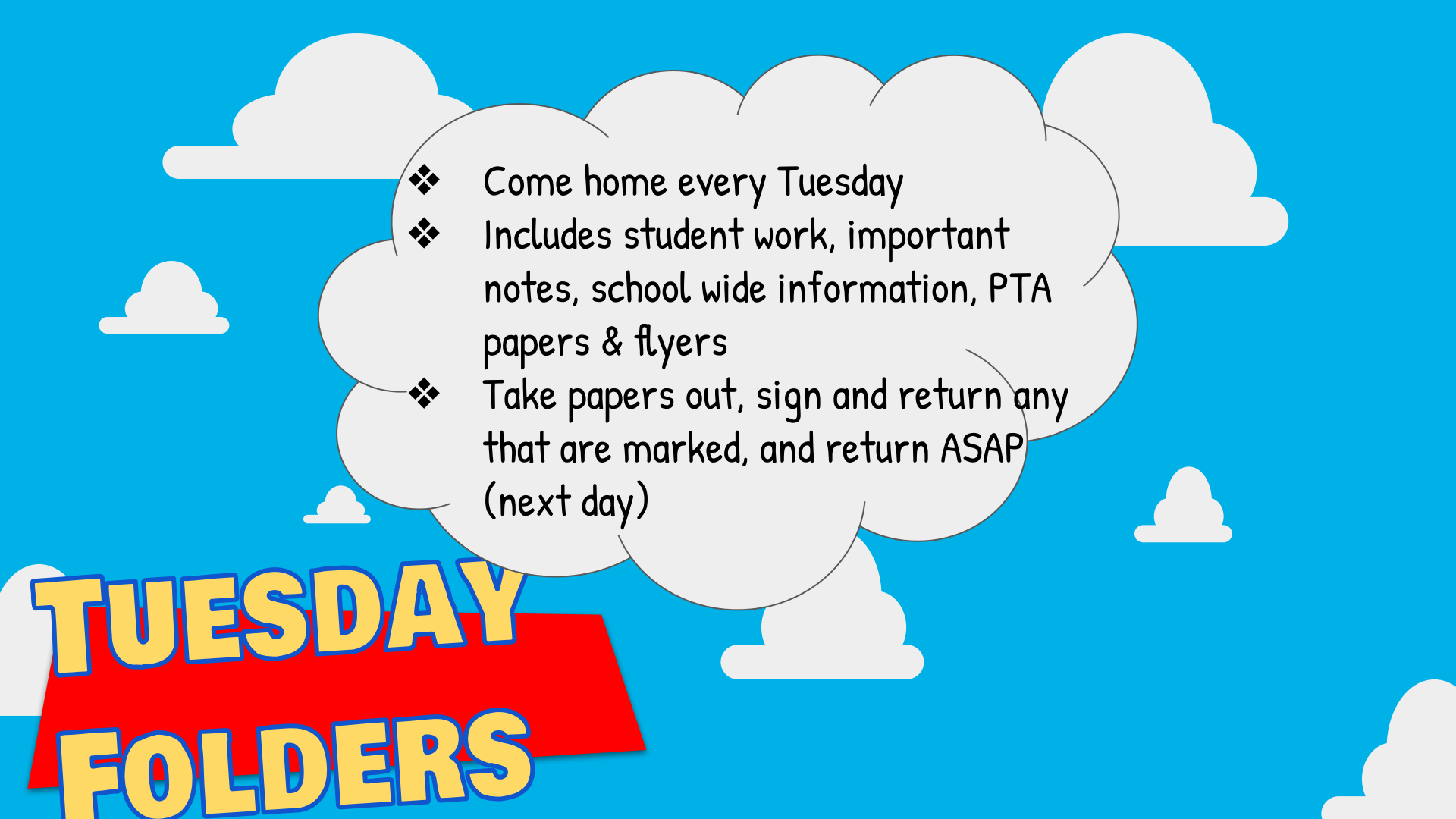
NEGATIVE POINTS

- ★ Continued talking
- ★ Exhibiting disrespectful behaviors
- ★ Exhibiting unsafe behavior
- ★ Continued Off Task
- ★ Breaking school rules

PARENT CONFERENCES

We can meet in the
Fall and the Spring

Parents may contact
AT ANY TIME
to set up a conference

- 
- ❖ Come home every Tuesday
 - ❖ Includes student work, important notes, school wide information, PTA papers & flyers
 - ❖ Take papers out, sign and return any that are marked, and return ASAP (next day)

**TUESDAY
FOLDERS**

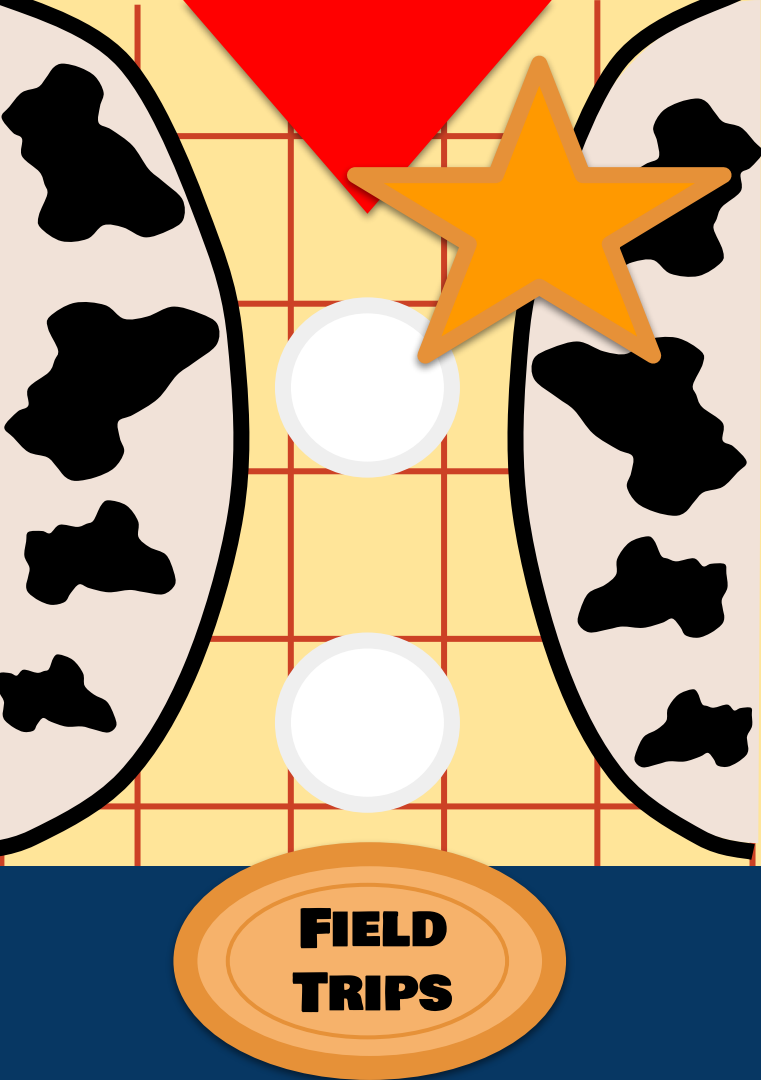


TRANSPORTATION /CAR LINE

- ★ Must make changes in SDM (School Dismissal Manager) by 1:30pm
- ★ Morning Car Line is open 7:10-7:35
- ★ If you are late, park and walk them in
- ★ Afternoon Car Line is open 2:35-3:00
- ★ Must have a #Number for Car Line

ATTENDANCE

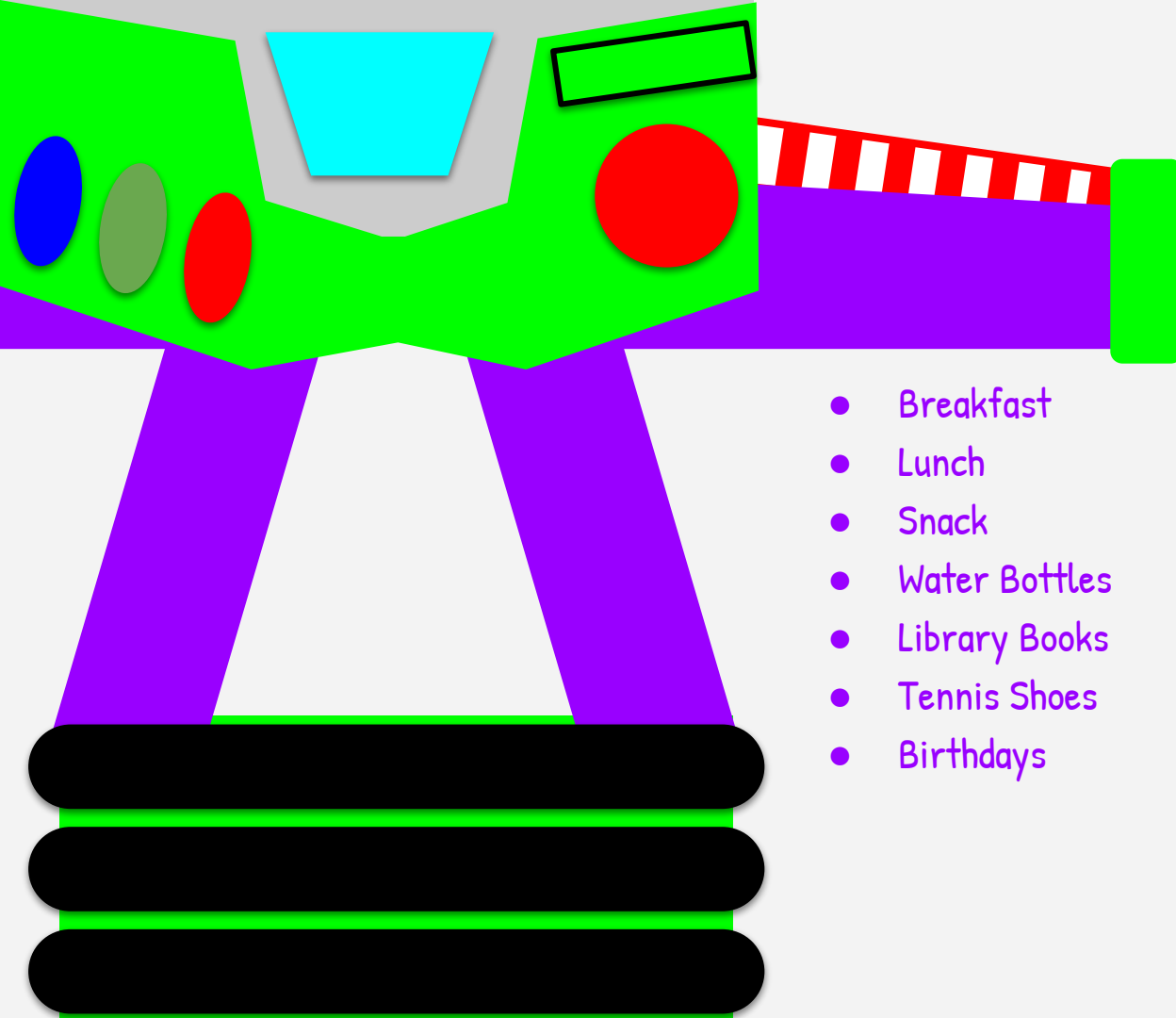
- ★ If absent, send parent note or doctor's excuse to hrtgattendance@madisoncity.k12.al.us
- ★ Tardies count for students that are late or if they are checked out.
- ★ 10 Parent Notes allowed per year



Proposed Field Trips: Play at VBC Playhouse (Fall),
Let's Pretend Hospital (Spring), Zoo (Spring)

While no trips are overnight, we do go out of the county to visit the Zoo. Please go ahead and fill out the "Out of County Form" and have the permission form Notarized (Mrs. Lipski can do this in the office tonight or by appointment).

If you plan to attend ANY Field Trip - or help out at school (activities, lunch, volunteer, celebrations, etc) you will be required to have a BIB card from a Background Check. Any parent without a valid (good for 1 year) BIB card will not be allowed to attend our field trips.



READY TO BLAST OFF!!

- Breakfast
- Lunch
- Snack
- Water Bottles
- Library Books
- Tennis Shoes
- Birthdays

- 2 Class Celebrations
- Early Dismissal
- E-Learning
- Volunteer Opportunities
- Join PTA!
- Communication
- Newsletters









CREDITS

Presentation Template: Matthew Meyer

To comply with this template's license, you have to keep this slide or mention the creator in the footer of a slide.

Matt has added even more awesome illustrations to his deck, you can get the new version

HERE